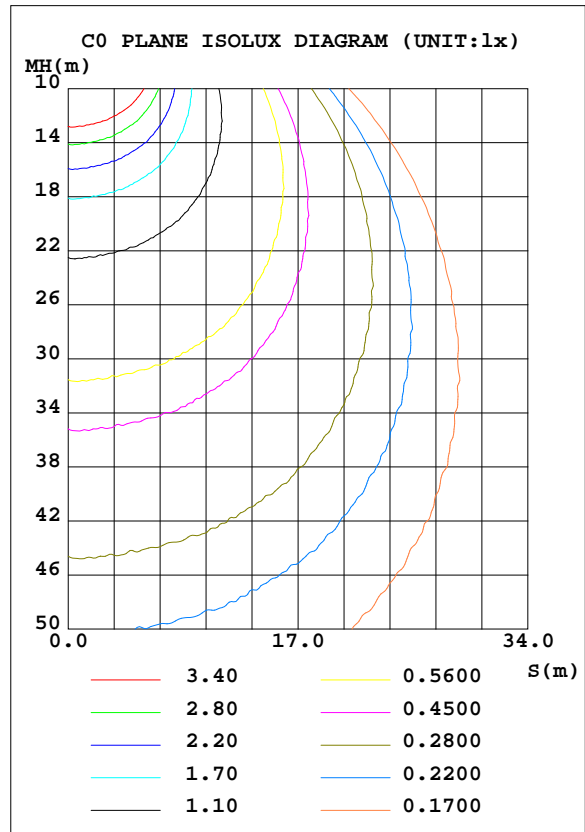
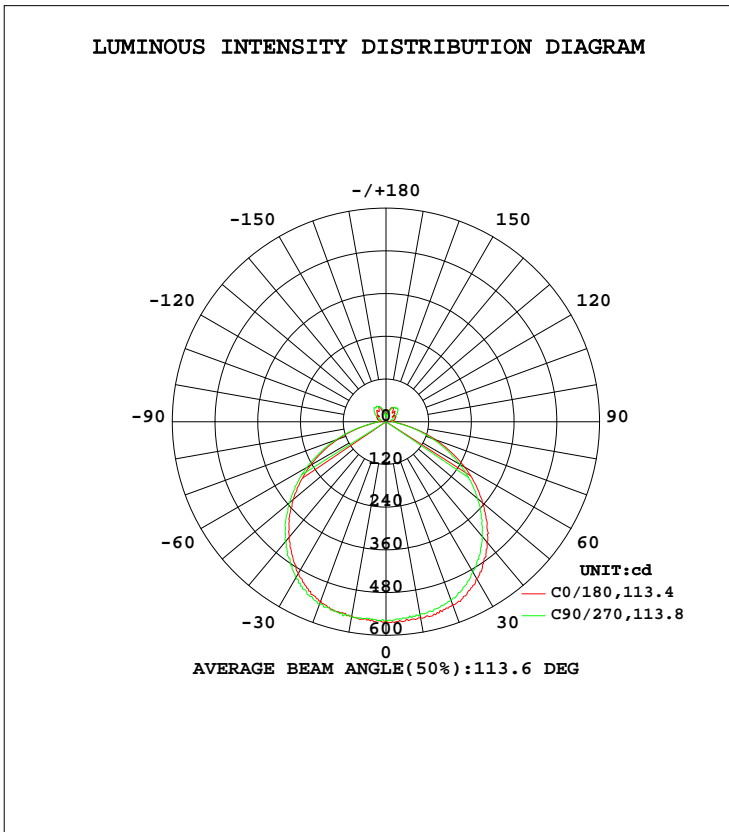


LUMINAIRE PHOTOMETRIC TEST REPORT

Test:U:120.11V I:0.2081A P:24.850W PF:0.9939 Freq:60.00Hz Lamp Flux:1823.8x1 lm		
NAME:	TYPE:	WEIGHT:
SPEC.:	DIM.:	SERIAL No.:
MFR.:	SUR.:	Shielding Angle:

DATA OF LAMP		PHOTOMETRIC DATA Eff: 73.39 lm/W			
MODEL	27P-26S-952C5-120D-WH	I _{max} (cd)	564.8	S/MH(C0/180)	1.30
NOMINAL POWER(W)	25	LOR(%)	100.0	S/MH(C90/270)	1.33
RATED VOLTAGE(V)	120	TOTAL FLUX(lm)	1823.8	η UP, DN(C0-180)	5.0,44.4
NOMINAL FLUX(lm)	1823.8	CIE CLASS	SEMI-D.	η UP, DN(C180-360)	5.2,45.5
LAMPS INSIDE	1	η up(%)	10.2	CIBSE SHR NOM	1.25
TEST VOLTAGE(V)	120	η down(%)	89.8	CIBSE SHR MAX	1.35



C Range: 0 - 360DEG
 C Interval: 22.5DEG
 Test Speed: HIGH
 Temperature:25.1DEG
 Operators:Wilson
 Test Date:2022-12-15

γ Range: 0 - 180DEG
 γ Interval: 0.5DEG
 Test System:EVERFINE GO-R5000_V2 SYSTEM V2.00.444
 Humidity:60.5%
 Test Distance:2.635m [K=1.0000]
 Remarks: File No.: WT-F-504-3206-01-A

Checker: Near Gao

Assessor: Akin Xu

ZONAL FLUX DIAGRAM

ZONAL FLUX DIAGRAM:

γ	C0	C45	C90	C135	C180	C225	C270	C315	γ	Φ zone	Φ total	%lum, lamp
10	558.8	554.8	549.0	553.1	553.6	555.1	556.8	557.6	0- 10	53.10	53.10	2.91,2.91
20	545.4	541.0	532.6	533.1	535.3	540.3	545.6	545.5	10- 20	155.3	208.4	11.4,11.4
30	508.2	500.6	487.5	487.5	492.3	496.7	505.1	512.3	20- 30	240.9	449.3	24.6,24.6
40	440.4	429.5	423.0	418.7	422.5	428.1	437.4	444.7	30- 40	291.7	741.0	40.6,40.6
50	353.6	343.5	336.5	332.9	339.7	346.1	354.8	359.8	40- 50	300.3	1041	57.1,57.1
60	253.8	245.3	240.6	238.3	244.4	250.5	257.4	260.4	50- 60	266.3	1308	71.7,71.7
70	148.1	142.4	139.3	137.8	143.2	147.4	151.9	153.0	60- 70	194.5	1502	82.4,82.4
80	54.25	53.09	48.73	47.31	52.87	56.38	56.21	55.03	70- 80	101.6	1604	87.9,87.9
90	23.69	22.59	19.76	19.05	22.08	24.16	23.16	22.93	80- 90	34.93	1639	89.8,89.8
100	17.88	12.82	16.44	11.31	16.91	12.92	18.47	12.52	90-100	18.92	1658	90.9,90.9
110	27.63	24.31	17.35	21.03	25.88	23.50	16.92	23.18	100-110	19.15	1677	91.9,91.9
120	30.75	35.89	29.29	32.58	27.19	34.14	29.10	35.14	110-120	25.39	1702	93.3,93.3
130	27.01	45.40	42.99	42.83	27.93	43.34	42.61	44.21	120-130	31.29	1733	95,95
140	39.44	46.60	50.89	44.85	40.91	46.54	51.71	48.03	130-140	32.92	1766	96.8,96.8
150	42.44	46.63	47.27	43.10	38.05	45.14	50.35	47.80	140-150	26.62	1793	98.3,98.3
160	40.79	37.93	35.51	37.38	35.59	39.90	42.70	36.93	150-160	19.94	1813	99.4,99.4
170	23.99	23.18	20.54	23.75	25.70	24.65	30.32	15.70	160-170	9.105	1822	99.9,99.9
180	17.13	18.83	19.05	16.48	17.35	18.80	19.04	16.43	170-180	1.788	1824	100,100
DEG	LUMINOUS INTENSITY:cd									UNIT:lm		

Conical surface Flux(90deg): 892.82 lm

%lum = 49.0%
%lamp = 49.0%

Conical surface Flux(120deg): 1307.6 lm

%lum = 71.7%
%lamp = 71.7%

C Range: 0 - 360DEG
C Interval: 22.5DEG
Test Speed: HIGH
Temperature:25.1DEG
Operators:Wilson
Test Date:2022-12-15

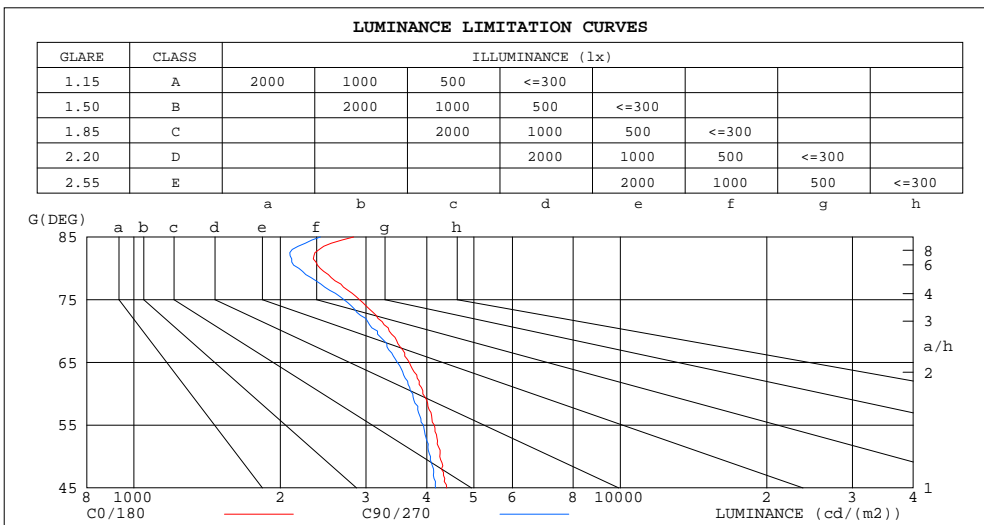
γ Range: 0 - 180DEG
γ Interval: 0.5DEG
Test System:EVERFINE GO-R5000_V2 SYSTEM V2.00.444
Humidity:60.5%
Test Distance:2.635m [K=1.0000]
Remarks: File No.: WT-F-504-3206-01-A

Checker: Near Gao

Assessor: Akin Xu

LUMINANCE LIMITATION CURVES

Test:U:120.11V I:0.2081A P:24.850W PF:0.9939 Freq:60.00Hz Lamp Flux:1823.8x1 lm		
NAME:	TYPE:	WEIGHT:
SPEC.:	DIM.:	SERIAL No.:
MFR.:	SUR.:	Shielding Angle:



LUMINANCE cd/(m2)		
G(DEG)	C0/180	C90/270
85	2830	2418
80	2416	2183
75	2912	2705
70	3349	3169
65	3684	3481
60	3927	3744
55	4147	3937
50	4256	4073
45	4395	4168

C Range: 0 - 360DEG
 C Interval: 22.5DEG
 Test Speed: HIGH
 Temperature: 25.1DEG
 Operators: Wilson
 Test Date: 2022-12-15

γ Range: 0 - 180DEG
 γ Interval: 0.5DEG
 Test System: EVERFINE GO-R5000_V2 SYSTEM V2.00.444
 Humidity: 60.5%
 Test Distance: 2.635m [K=1.0000]
 Remarks: File No.: WT-F-504-3206-01-A

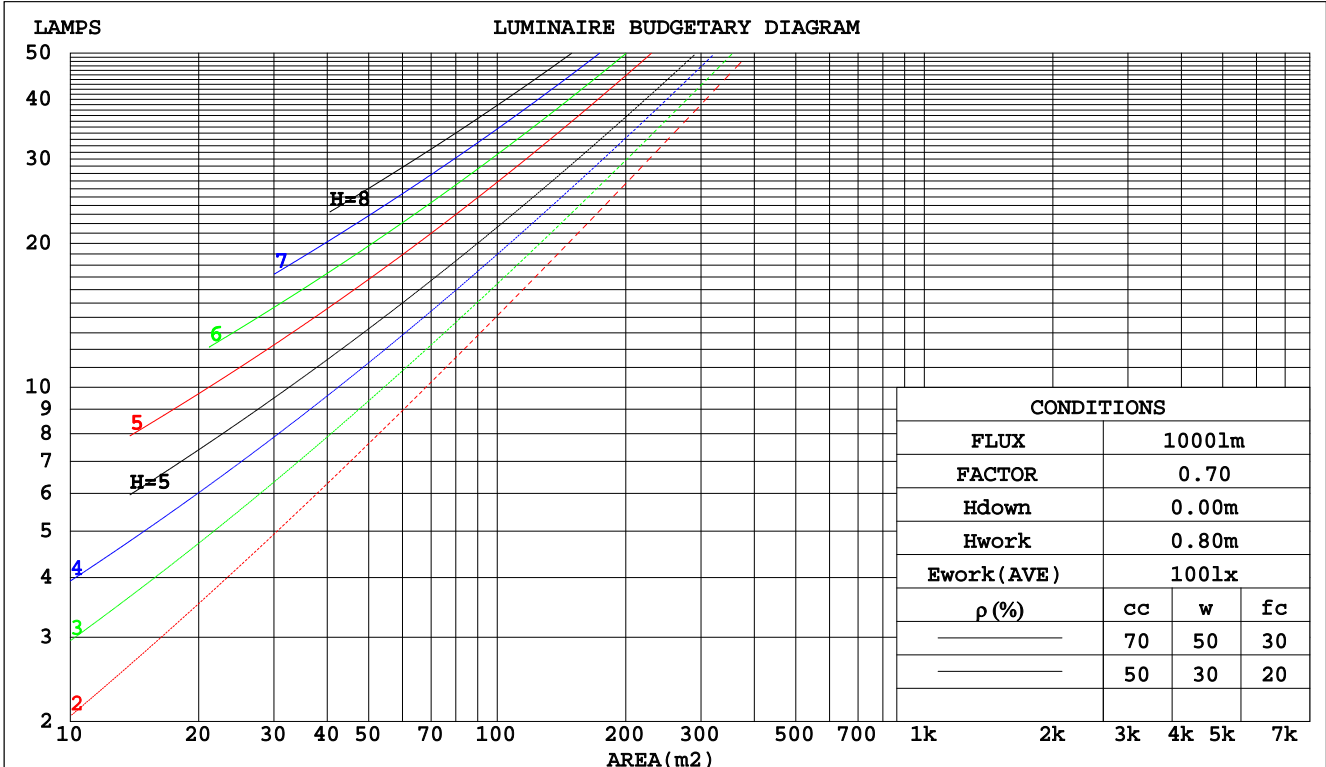
Checker: Near Gao

Assessor: Akin Xu

CU AND LUMINAIRE BUDGETARY ESTIMATE DIAGRAM

Test:U:120.11V I:0.2081A P:24.850W PF:0.9939 Freq:60.00Hz		
Lamp Flux:1823.8x1 lm		
NAME:	TYPE:	WEIGHT:
SPEC.:	DIM.:	SERIAL No.:
MFR.:	SUR.:	Shielding Angle:

pcc	80%			70%			50%			30%			10%			0
	50%	30%	10%	50%	30%	10%	50%	30%	10%	50%	30%	10%	50%	30%	10%	0
pw																0
pfc	20%			20%			20%			20%			20%			0
RCR	RCR:Room Cavity Ratio						Coefficients of Utilization(CU)									
0.0	1.17	1.17	1.17	1.13	1.13	1.13	1.05	1.05	1.05	.99	.99	.99	.93	.93	.93	.90
1.0	1.02	.98	.94	.99	.95	.91	.92	.89	.87	.87	.84	.82	.82	.80	.78	.75
2.0	.89	.82	.77	.86	.80	.75	.81	.76	.72	.76	.72	.68	.72	.68	.65	.63
3.0	.78	.70	.64	.76	.68	.62	.71	.65	.60	.67	.62	.58	.63	.59	.56	.53
4.0	.69	.60	.54	.67	.59	.53	.63	.57	.51	.60	.54	.49	.57	.52	.48	.45
5.0	.62	.53	.46	.60	.52	.46	.57	.50	.44	.54	.48	.43	.51	.46	.41	.39
6.0	.55	.47	.40	.54	.46	.40	.51	.44	.39	.49	.42	.37	.46	.41	.36	.34
7.0	.50	.42	.36	.49	.41	.35	.46	.39	.34	.44	.38	.33	.42	.36	.32	.30
8.0	.46	.37	.32	.45	.37	.31	.42	.35	.30	.40	.34	.30	.39	.33	.29	.27
9.0	.42	.34	.28	.41	.33	.28	.39	.32	.27	.37	.31	.27	.36	.30	.26	.24
10.0	.39	.31	.26	.38	.30	.25	.36	.29	.25	.34	.28	.24	.33	.28	.24	.22



C Range: 0 - 360DEG
 C Interval: 22.5DEG
 Test Speed: HIGH
 Temperature: 25.1DEG
 Operators: Wilson
 Test Date: 2022-12-15

γ Range: 0 - 180DEG
 γ Interval: 0.5DEG
 Test System: EVERFINE GO-R5000_V2 SYSTEM V2.00.444
 Humidity: 60.5%
 Test Distance: 2.635m [K=1.0000]
 Remarks: File No.: WT-F-504-3206-01-A

Checker: Near Gao

Assessor: Akin Xu

WEC AND CCEC

Test:U:120.11V I:0.2081A P:24.850W PF:0.9939 Freq:60.00Hz		
Lamp Flux:1823.8x1 lm		
NAME:	TYPE:	WEIGHT:
SPEC.:	DIM.:	SERIAL No.:
MFR.:	SUR.:	Shielding Angle:

ρcc	80%			70%			50%			30%			10%			0
ρw	50%	30%	10%	50%	30%	10%	50%	30%	10%	50%	30%	10%	50%	30%	10%	0
ρfc	20%			20%			20%			20%			20%			0
RCR	RCR:Room Cavity Ratio						Wall Exitance Coefficients(WEC)									
0.0																
1.0	.302	.172	.054	.292	.167	.053	.273	.157	.050	.256	.148	.047	.240	.139	.045	
2.0	.284	.155	.048	.275	.151	.047	.258	.143	.044	.242	.136	.042	.228	.129	.041	
3.0	.263	.140	.042	.255	.136	.041	.239	.130	.039	.225	.123	.038	.212	.118	.036	
4.0	.243	.126	.037	.236	.123	.036	.222	.118	.035	.209	.112	.034	.197	.107	.033	
5.0	.225	.115	.033	.218	.112	.033	.206	.107	.032	.194	.103	.031	.184	.098	.029	
6.0	.209	.105	.030	.203	.103	.030	.192	.098	.029	.181	.094	.028	.171	.090	.027	
7.0	.195	.096	.027	.189	.094	.027	.179	.091	.026	.169	.087	.025	.160	.083	.025	
8.0	.182	.089	.025	.177	.087	.025	.168	.084	.024	.159	.081	.023	.151	.077	.023	
9.0	.171	.083	.023	.166	.081	.023	.158	.078	.022	.150	.075	.021	.142	.072	.021	
10.0	.161	.077	.021	.156	.076	.021	.149	.073	.021	.141	.070	.020	.134	.067	.019	

ρcc	80%			70%			50%			30%			10%			0
ρw	50%	30%	10%	50%	30%	10%	50%	30%	10%	50%	30%	10%	50%	30%	10%	0
ρfc	20%			20%			20%			20%			20%			0
RCR	RCR:Room Cavity Ratio						Ceiling Cavity Exitance Coefficients(CCEC)									
0.0	.268	.268	.268	.229	.229	.229	.156	.156	.156	.090	.090	.090	.029	.029	.029	
1.0	.258	.234	.213	.221	.201	.183	.151	.138	.127	.087	.080	.074	.028	.026	.024	
2.0	.250	.210	.177	.214	.181	.153	.147	.125	.107	.084	.073	.063	.027	.024	.020	
3.0	.242	.193	.154	.207	.167	.134	.142	.116	.094	.082	.068	.055	.026	.022	.018	
4.0	.235	.180	.139	.201	.156	.120	.138	.108	.085	.080	.064	.050	.026	.021	.016	
5.0	.227	.170	.128	.195	.147	.111	.134	.103	.078	.078	.060	.046	.025	.020	.015	
6.0	.220	.162	.120	.189	.140	.104	.131	.098	.074	.076	.058	.044	.024	.019	.014	
7.0	.214	.155	.114	.184	.134	.099	.127	.094	.070	.074	.055	.042	.024	.018	.014	
8.0	.208	.149	.109	.179	.130	.095	.124	.091	.068	.072	.054	.040	.023	.018	.013	
9.0	.202	.144	.106	.174	.125	.092	.120	.088	.066	.070	.052	.039	.023	.017	.013	
10.0	.196	.140	.103	.169	.122	.090	.117	.086	.064	.068	.051	.038	.022	.017	.013	

C Range: 0 - 360DEG
 C Interval: 22.5DEG
 Test Speed: HIGH
 Temperature:25.1DEG
 Operators:Wilson
 Test Date:2022-12-15

γ Range: 0 - 180DEG
 γ Interval: 0.5DEG
 Test System:EVERFINE GO-R5000_V2 SYSTEM V2.00.444
 Humidity:60.5%
 Test Distance:2.635m [K=1.0000]
 Remarks: File No.: WT-F-504-3206-01-A

Checker: Near Gao

Assessor: Akin Xu

UGR(Unified Glare Rating) Table

Test:U:120.11V I:0.2081A P:24.850W PF:0.9939 Freq:60.00Hz										
Lamp Flux:1823.8x1 lm										
NAME:			TYPE:			WEIGHT:				
SPEC.:			DIM.:			SERIAL No.:				
MFR.:			SUR.:			Shielding Angle:				
ceiling/cavity	0.7	0.7	0.5	0.5	0.3	0.7	0.7	0.5	0.5	0.3
walls	0.5	0.3	0.5	0.3	0.3	0.5	0.3	0.5	0.3	0.3
working plane	0.2	0.2	0.2	0.2	0.2	0.2	0.2	0.2	0.2	0.2
Room dimensions	Viewed crosswise					Viewed endwise				
x = 2H y = 2H	17.2	18.6	17.6	19.0	19.4	17.0	18.4	17.4	18.7	19.1
3H	18.6	19.8	19.0	20.2	20.7	18.3	19.5	18.7	19.9	20.4
4H	19.0	20.2	19.5	20.6	21.1	18.7	19.9	19.2	20.3	20.8
6H	19.3	20.4	19.8	20.9	21.3	19.0	20.1	19.5	20.5	21.0
8H	19.4	20.5	19.9	20.9	21.4	19.1	20.1	19.5	20.6	21.1
12H	19.5	20.5	20.0	21.0	21.5	19.1	20.1	19.6	20.6	21.1
4H 2H	17.7	18.9	18.2	19.3	19.8	17.5	18.7	18.0	19.1	19.6
3H	19.2	20.2	19.7	20.7	21.2	19.0	20.0	19.5	20.5	21.0
4H	19.8	20.7	20.3	21.2	21.7	19.5	20.5	20.1	21.0	21.5
6H	20.2	21.0	20.7	21.5	22.1	19.9	20.7	20.4	21.2	21.8
8H	20.3	21.1	20.9	21.6	22.2	20.0	20.8	20.6	21.3	21.9
12H	20.4	21.1	21.0	21.7	22.3	20.1	20.8	20.7	21.4	22.0
8H 4H	19.9	20.7	20.5	21.2	21.8	19.7	20.5	20.3	21.0	21.6
6H	20.4	21.1	21.0	21.7	22.3	20.2	20.8	20.8	21.4	22.0
8H	20.7	21.2	21.3	21.8	22.5	20.4	20.9	21.0	21.5	22.2
12H	20.9	21.4	21.5	22.0	22.7	20.6	21.1	21.2	21.7	22.4
12H 4H	19.9	20.6	20.5	21.2	21.8	19.7	20.4	20.3	21.0	21.6
6H	20.5	21.0	21.1	21.6	22.3	20.2	20.8	20.8	21.4	22.0
8H	20.7	21.2	21.3	21.8	22.5	20.4	20.9	21.1	21.5	22.2
Variations with the observer position at spacings(CIE Pub.117):										
S = 1.0H	+ 0.2 / - 0.2					+ 0.2 / - 0.2				
1.5H	+ 0.2 / - 0.3					+ 0.2 / - 0.4				
2.0H	+ 0.2 / - 0.3					+ 0.2 / - 0.3				

CIE Pub.117, 1824 lm Total Lamp Luminous Flux Corrected (8log(F/F0) = 2.1)
 Area: 0.12876 m2

C Range: 0 - 360DEG
 C Interval: 22.5DEG
 Test Speed: HIGH
 Temperature:25.1DEG
 Operators:Wilson
 Test Date:2022-12-15

γ Range: 0 - 180DEG
 γ Interval: 0.5DEG
 Test System:EVERFINE GO-R5000_V2 SYSTEM V2.00.444
 Humidity:60.5%
 Test Distance:2.635m [K=1.0000]
 Remarks: File No.: WT-F-504-3206-01-A

Checker: Near Gao

Assessor: Akin Xu

UTILIZATION FACTORS TABLE

Test:U:120.11V I:0.2081A P:24.850W PF:0.9939 Freq:60.00Hz Lamp Flux:1823.8x1 lm		
NAME:	TYPE:	WEIGHT:
SPEC.:	DIM.:	SERIAL No.:
MFR.:	SUR.:	Shielding Angle:

REFLECTANCE										
Ceiling	0.8	0.8	0.8	0.7	0.7	0.7	0.5	0.5	0.5	0
Walls	0.7	0.5	0.3	0.7	0.5	0.3	0.7	0.5	0.3	0
Working plane	0.2	0.2	0.2	0.2	0.2	0.2	0.2	0.2	0.2	0
ROOM INDEX	UTILIZATION FACTORS(PERCENT) k(RI) x RCR = 5									
k = 0.60	55	43	37	54	43	36	52	42	36	29
0.80	65	53	46	63	53	46	61	51	45	37
1.00	73	62	55	71	61	54	68	61	53	45
1.25	80	70	62	78	68	62	74	66	60	52
1.50	85	75	68	83	74	67	79	71	65	56
2.00	92	83	77	90	82	76	85	78	73	63
2.50	96	88	82	93	86	80	88	82	77	67
3.00	99	92	87	96	90	85	91	86	82	71
4.00	103	98	93	100	95	91	94	90	87	75
5.00	106	101	97	103	98	94	96	93	90	77
ROOM INDEX	UF(total)									Direct
According to DIN EN 13032-2 2004			Suspended				SHRNOM = 1.25			

C Range: 0 - 360DEG
 C Interval: 22.5DEG
 Test Speed: HIGH
 Temperature:25.1DEG
 Operators:Wilson
 Test Date:2022-12-15

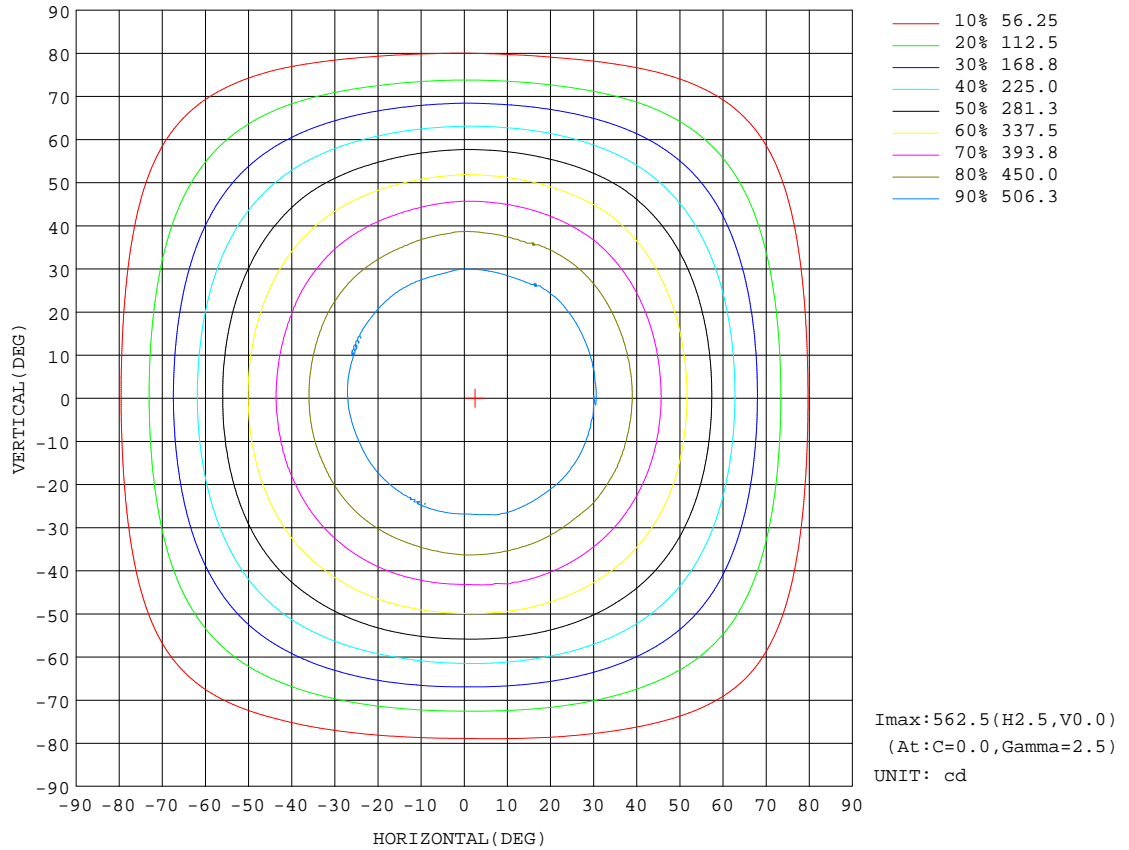
γ Range: 0 - 180DEG
 γ Interval: 0.5DEG
 Test System:EVERFINE GO-R5000_V2 SYSTEM V2.00.444
 Humidity:60.5%
 Test Distance:2.635m [K=1.0000]
 Remarks: File No.: WT-F-504-3206-01-A

Checker: Near Gao

Assessor: Akin Xu

ISOCANDELA DIAGRAM

Test:U:120.11V I:0.2081A P:24.850W PF:0.9939 Freq:60.00Hz Lamp Flux:1823.8x1 lm		
NAME:	TYPE:	WEIGHT:
SPEC.:	DIM.:	SERIAL No.:
MFR.:	SUR.:	Shielding Angle:



C Range: 0 - 360DEG
 C Interval: 22.5DEG
 Test Speed: HIGH
 Temperature: 25.1DEG
 Operators: Wilson
 Test Date: 2022-12-15

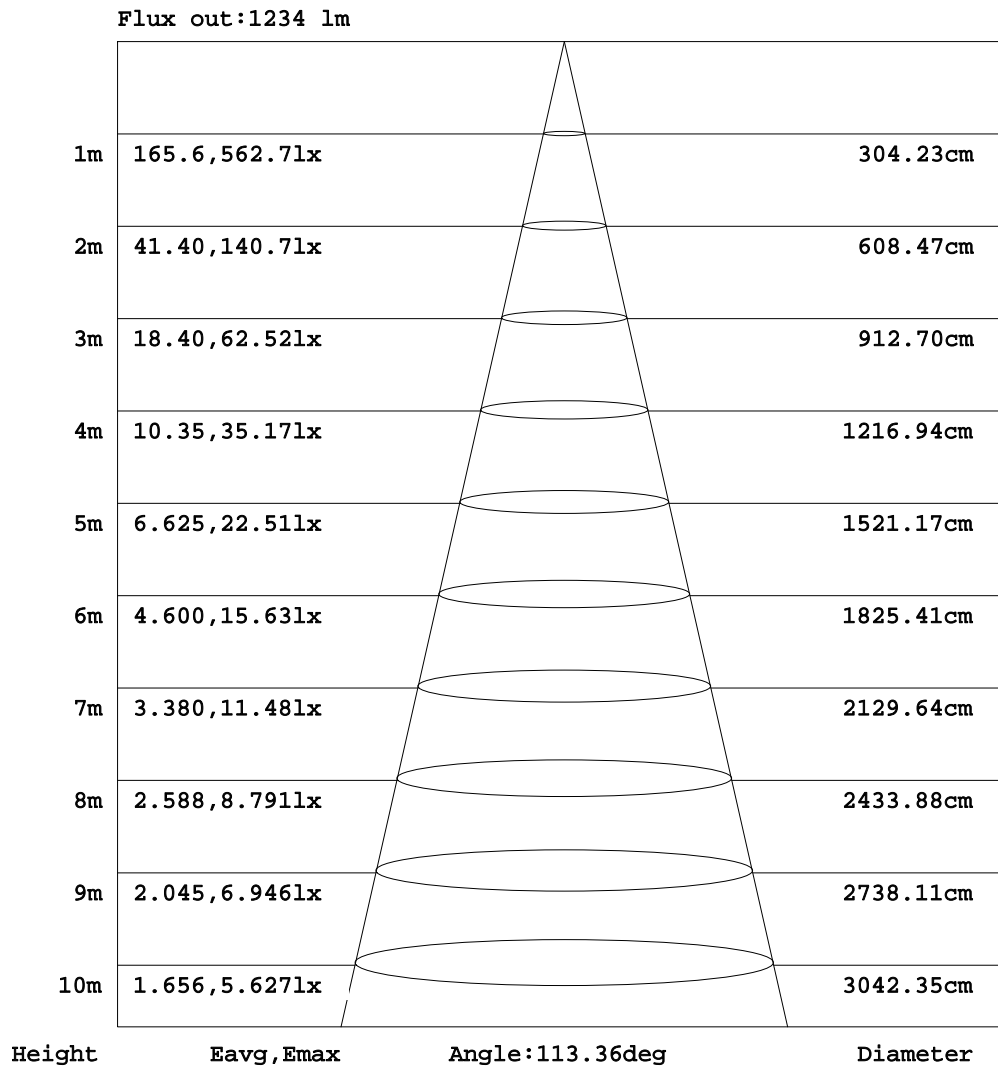
γ Range: 0 - 180DEG
 γ Interval: 0.5DEG
 Test System: EVERFINE GO-R5000_V2 SYSTEM V2.00.444
 Humidity: 60.5%
 Test Distance: 2.635m [K=1.0000]
 Remarks: File No.: WT-F-504-3206-01-A

Checker: Near Gao

Assessor: Akin Xu

AAI Figure

Test:U:120.11V I:0.2081A P:24.850W PF:0.9939 Freq:60.00Hz Lamp Flux:1823.8x1 lm		
NAME:	TYPE:	WEIGHT:
SPEC.:	DIM.:	SERIAL No.:
MFR.:	SUR.:	Shielding Angle:



Note: The Curves indicate the illuminated area and the average illumination when the luminaire is at different distance.

C Range: 0 - 360DEG
 C Interval: 22.5DEG
 Test Speed: HIGH
 Temperature: 25.1DEG
 Operators: Wilson
 Test Date: 2022-12-15

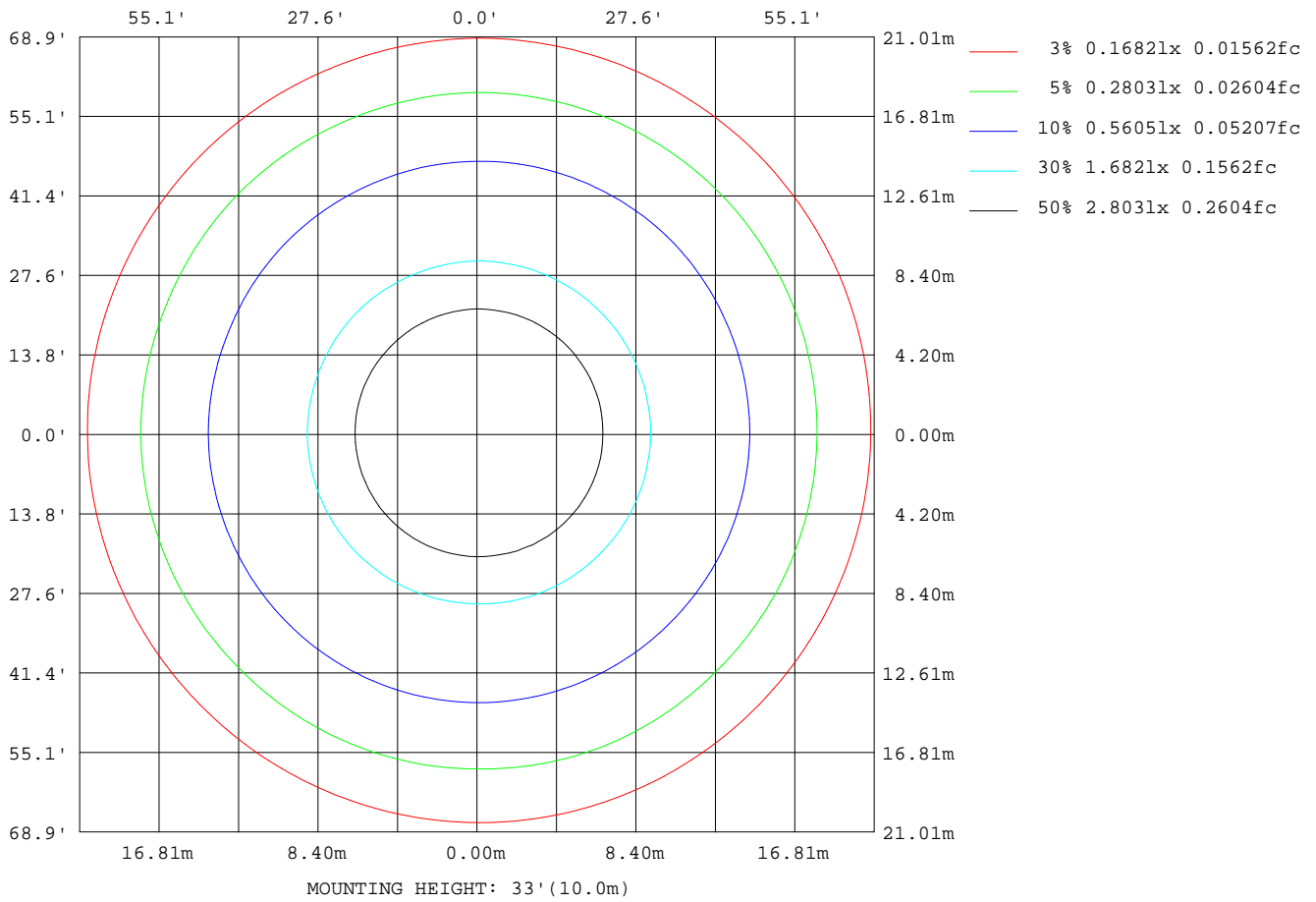
γ Range: 0 - 180DEG
 γ Interval: 0.5DEG
 Test System: EVERFINE GO-R5000_V2 SYSTEM V2.00.444
 Humidity: 60.5%
 Test Distance: 2.635m [K=1.0000]
 Remarks: File No.: WT-F-504-3206-01-A

Checker: Near Gao

Assessor: Akin Xu

ISOLUX DIAGRAM

Test:U:120.11V I:0.2081A P:24.850W PF:0.9939 Freq:60.00Hz Lamp Flux:1823.8x1 lm		
NAME:	TYPE:	WEIGHT:
SPEC.:	DIM.:	SERIAL No.:
MFR.:	SUR.:	Shielding Angle:



C Range: 0 - 360DEG
 C Interval: 22.5DEG
 Test Speed: HIGH
 Temperature: 25.1DEG
 Operators: Wilson
 Test Date: 2022-12-15

γ Range: 0 - 180DEG
 γ Interval: 0.5DEG
 Test System: EVERFINE GO-R5000_V2 SYSTEM V2.00.444
 Humidity: 60.5%
 Test Distance: 2.635m [K=1.0000]
 Remarks: File No.: WT-F-504-3206-01-A

Checker: Near Gao

Assessor: Akin Xu

LED Avg.L Report

Test:U:120.11V I:0.2081A P:24.850W PF:0.9939 Freq:60.00Hz Lamp Flux:1823.8x1 lm		
NAME:	TYPE:	WEIGHT:
SPEC.:	DIM.:	SERIAL No.:
MFR.:	SUR.:	Shielding Angle:

AvgL	cd/m2
L_0~180(65)av	3628
L_0~180(75)av	2885
L_0~180(85)av	2774
L_90~270(65)av	3603
L_90~270(75)av	2850
L_90~270(85)av	2603
L_45(65)av	3615
L_45(75)av	2870
L_45(85)av	2696

Standard: GB/T 29293-2012

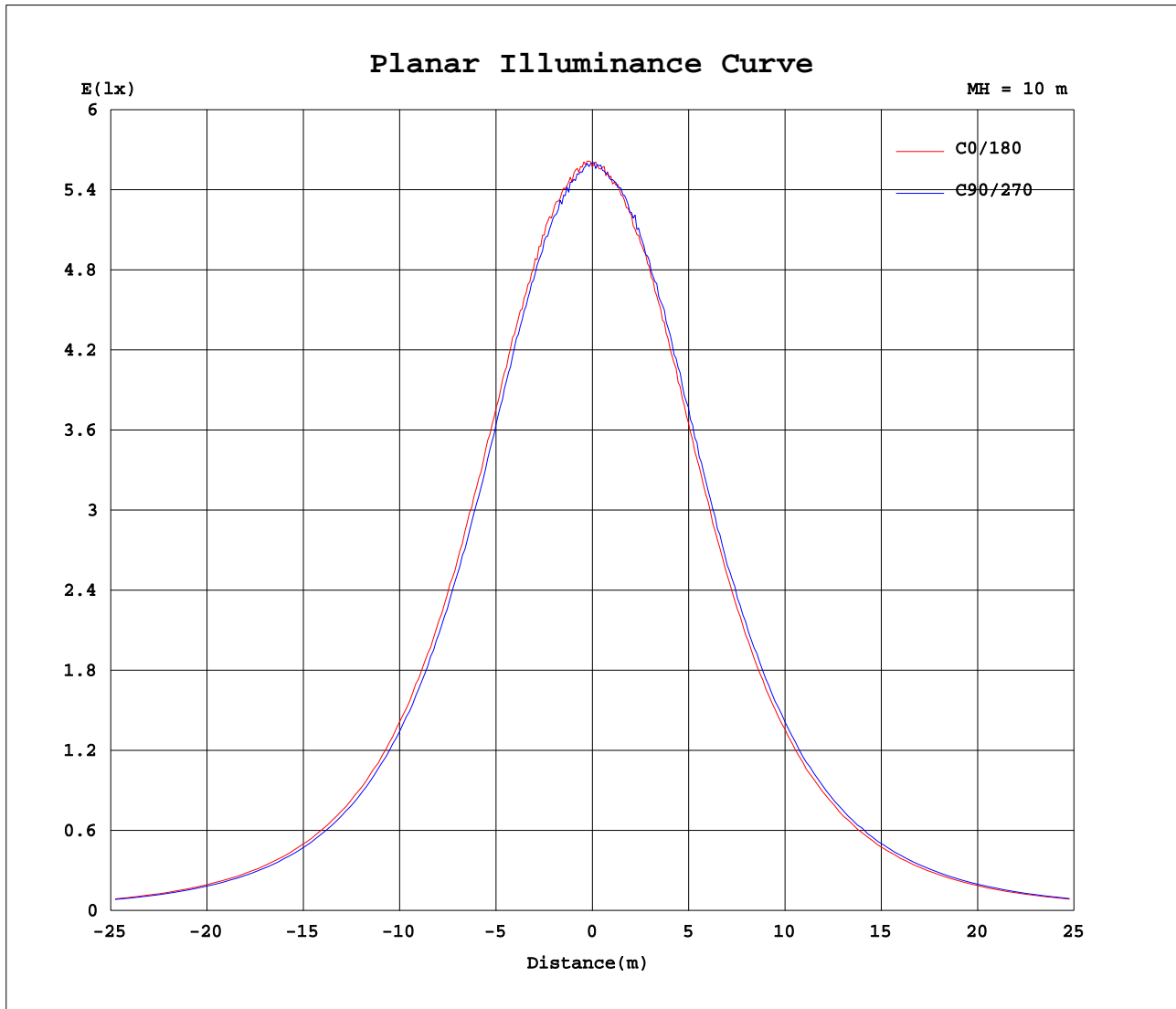
C Range: 0 - 360DEG
 C Interval: 22.5DEG
 Test Speed: HIGH
 Temperature:25.1DEG
 Operators:Wilson
 Test Date:2022-12-15

γ Range: 0 - 180DEG
 γ Interval: 0.5DEG
 Test System:EVERFINE GO-R5000_V2 SYSTEM V2.00.444
 Humidity:60.5%
 Test Distance:2.635m [K=1.0000]
 Remarks: File No.: WT-F-504-3206-01-A

Checker: Near Gao

Assessor: Akin Xu

Planar Illuminance Curve



C Range: 0 - 360DEG
 C Interval: 22.5DEG
 Test Speed: HIGH
 Temperature: 25.1DEG
 Operators: Wilson
 Test Date: 2022-12-15

γ Range: 0 - 180DEG
 γ Interval: 0.5DEG
 Test System: EVERFINE GO-R5000_V2 SYSTEM V2.00.444
 Humidity: 60.5%
 Test Distance: 2.635m [K=1.0000]
 Remarks: File No.: WT-F-504-3206-01-A

Checker: Near Gao

Assessor: Akin Xu

LUMINOUS DISTRIBUTION INTENSITY DATA

Test:U:120.11V I:0.2081A P:24.850W PF:0.9939 Freq:60.00Hz		
Lamp Flux:1823.8x1 lm		
NAME:	TYPE:	WEIGHT:
SPEC.:	DIM.:	SERIAL No.:
MFR.:	SUR.:	Shielding Angle:

Table--1

UNIT: cd

C(DEG) γ (DEG)	0	22.5	45	67.5	90	112.5	135	157.5	180	202.5	225	247.5	270	292.5	315	337.5			
0	559	559	559	559	559	559	559	559	559	559	559	559	559	559	559	559			
5	563	554	556	558	552	556	558	556	558	554	560	557	554	559	560	557			
10	559	554	555	555	549	549	553	550	554	553	555	559	557	559	558	556			
15	555	549	548	548	544	546	548	542	550	545	554	551	552	551	558	554			
20	545	543	541	539	533	532	533	531	535	538	540	543	546	548	545	540			
25	536	525	522	520	513	512	515	511	518	513	521	527	528	534	535	533			
30	508	501	501	499	488	487	487	486	492	492	497	502	505	506	512	509			
35	479	470	468	465	458	456	457	456	459	456	465	469	470	479	481	479			
40	440	435	429	429	423	417	419	419	422	422	428	431	437	439	445	442			
45	402	392	387	386	379	379	380	377	386	380	390	392	399	401	404	399			
50	354	348	344	342	336	335	333	335	340	339	346	351	355	355	360	355			
55	308	299	296	293	290	290	288	288	294	291	299	302	305	311	313	306			
60	254	249	245	246	241	239	238	240	244	244	250	252	257	258	260	255			
65	201	195	193	191	189	189	187	189	194	192	199	200	203	206	207	204			
70	148	145	142	141	139	137	138	139	143	144	147	149	152	152	153	149			
75	97.4	95.1	93.7	92.3	90.0	89.4	89.3	90.8	94.9	96.1	99.2	99.1	100.0	99.2	100	98.4			
80	54.2	54.5	53.1	52.0	48.7	48.0	47.3	49.6	52.9	54.2	56.4	55.9	56.2	54.2	55.0	54.1			
85	31.9	31.8	30.7	29.5	27.1	26.4	26.3	27.9	30.4	31.5	33.0	32.1	31.3	30.5	31.0	31.0			
90	23.7	23.4	22.6	21.4	19.8	18.8	19.1	20.2	22.1	23.5	24.2	23.7	23.2	22.9	22.9	23.1			
95	13.9	11.8	16.9	19.1	18.0	17.1	14.4	9.57	12.8	11.8	19.0	21.5	21.3	20.7	18.4	12.3			
100	17.9	16.6	12.8	15.7	16.4	13.9	11.3	14.2	16.9	16.8	12.9	16.3	18.5	16.8	12.5	15.1			
105	25.2	21.2	17.2	15.2	15.6	13.5	15.2	18.8	23.8	22.0	16.7	14.4	16.1	15.0	16.0	20.7			
110	27.6	22.6	24.3	18.6	17.4	17.0	21.0	20.1	25.9	23.0	23.5	17.4	16.9	17.7	23.2	22.1			
115	30.6	25.1	30.0	24.9	22.1	22.7	26.7	22.0	28.7	24.6	29.2	23.7	21.3	24.2	29.6	24.6			
120	30.8	26.4	35.9	32.2	29.3	29.7	32.6	23.6	27.2	26.0	34.1	30.6	29.1	31.9	35.1	27.1			
125	31.0	30.2	40.8	39.0	36.8	36.7	37.8	30.5	28.2	32.3	39.0	37.3	36.8	38.8	40.1	31.9			
130	27.0	35.1	45.4	44.1	43.0	42.4	42.8	32.5	27.9	35.4	43.3	42.9	42.6	44.3	44.2	34.8			
135	34.6	38.3	43.9	48.6	47.8	47.0	40.1	37.4	34.8	37.1	42.4	48.2	48.1	49.3	44.5	39.0			
140	39.4	39.2	46.6	49.0	50.9	47.8	44.8	33.4	40.9	38.7	46.5	49.0	51.7	49.5	48.0	30.3			
145	30.5	23.7	45.3	47.5	46.4	44.8	45.0	31.7	35.8	33.9	46.1	48.1	47.9	50.2	47.7	38.3			
150	42.4	38.5	46.6	49.0	47.3	45.2	43.1	41.0	38.1	33.9	45.1	48.4	50.3	50.5	47.8	40.5			
155	44.0	43.6	41.5	48.3	42.5	45.0	41.0	39.6	47.4	38.0	41.6	48.1	47.3	46.5	45.8	42.2			
160	40.8	37.9	37.9	32.8	35.5	40.3	37.4	36.0	35.6	36.4	39.9	42.3	42.7	31.2	36.9	35.5			
165	33.8	32.7	34.6	26.4	25.4	35.0	34.5	30.6	30.9	30.5	35.9	37.1	35.7	26.6	28.1	29.9			
170	24.0	25.9	23.2	18.4	20.5	28.5	23.8	26.6	25.7	26.4	24.6	29.3	30.3	23.4	15.7	23.1			
175	18.0	14.2	12.9	10.4	12.1	16.7	17.4	19.5	19.7	19.0	19.2	19.6	19.8	18.6	16.4	16.7			
180	17.1	16.7	18.8	20.9	19.1	20.4	16.5	15.6	17.4	16.7	18.8	20.7	19.0	20.4	16.4	15.6			

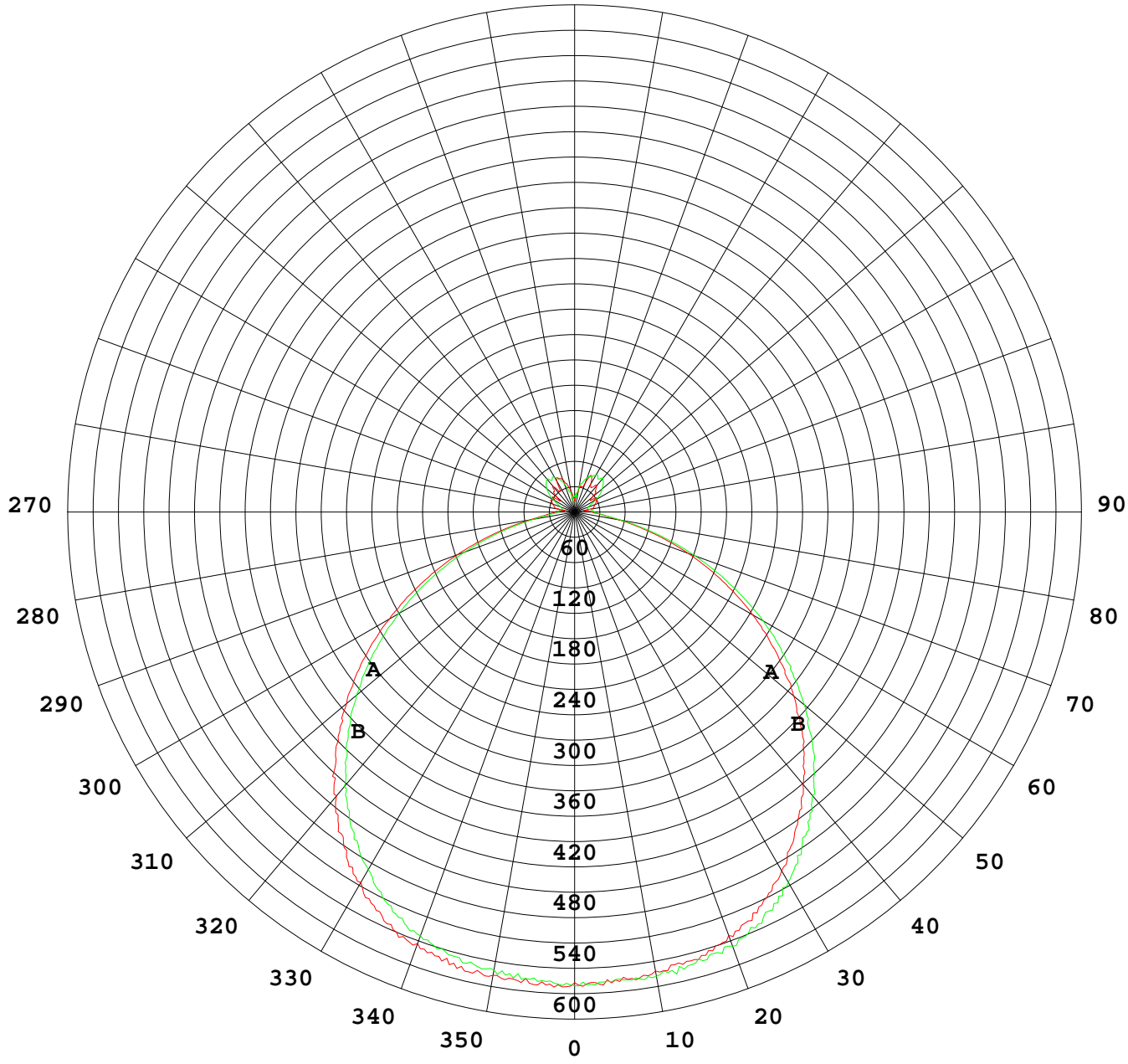
C Range: 0 - 360DEG
 C Interval: 22.5DEG
 Test Speed: HIGH
 Temperature:25.1DEG
 Operators:Wilson
 Test Date:2022-12-15

γ Range: 0 - 180DEG
 γ Interval: 0.5DEG
 Test System:EVERFINE GO-R5000_V2 SYSTEM V2.00.444
 Humidity:60.5%
 Test Distance:2.635m [K=1.0000]
 Remarks: File No.: WT-F-504-3206-01-A

Checker: Near Gao

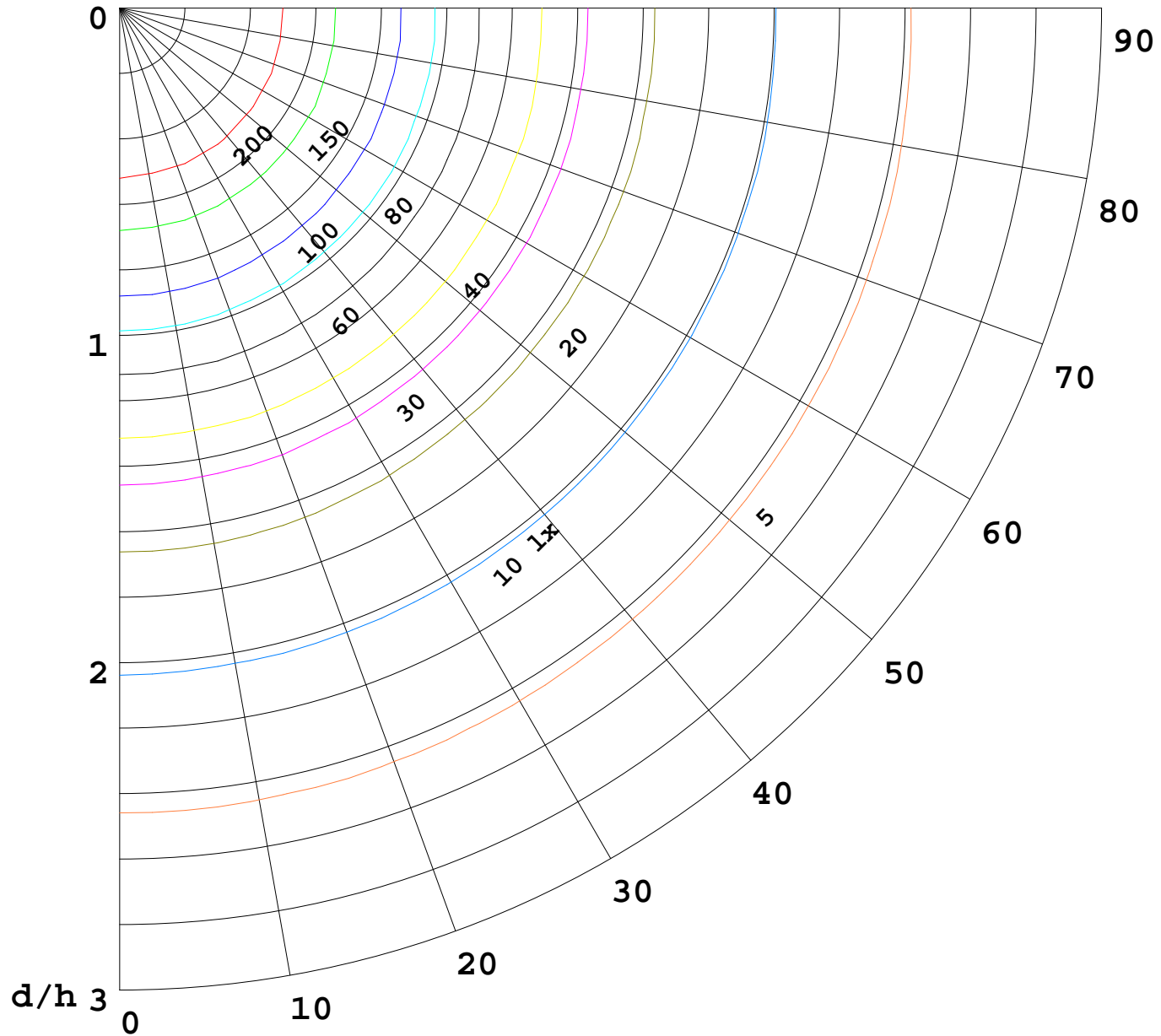
Assessor: Akin Xu

I(cd)



1000 lm

$K = 1$



F = 1000 lm
K = 0.7
Hcc = 0.8 m
Hfc = 0.0 m
Eave = 100 lx

	Pcc	Pw	Pfc
—————	70	50	30
—————	50	30	20

